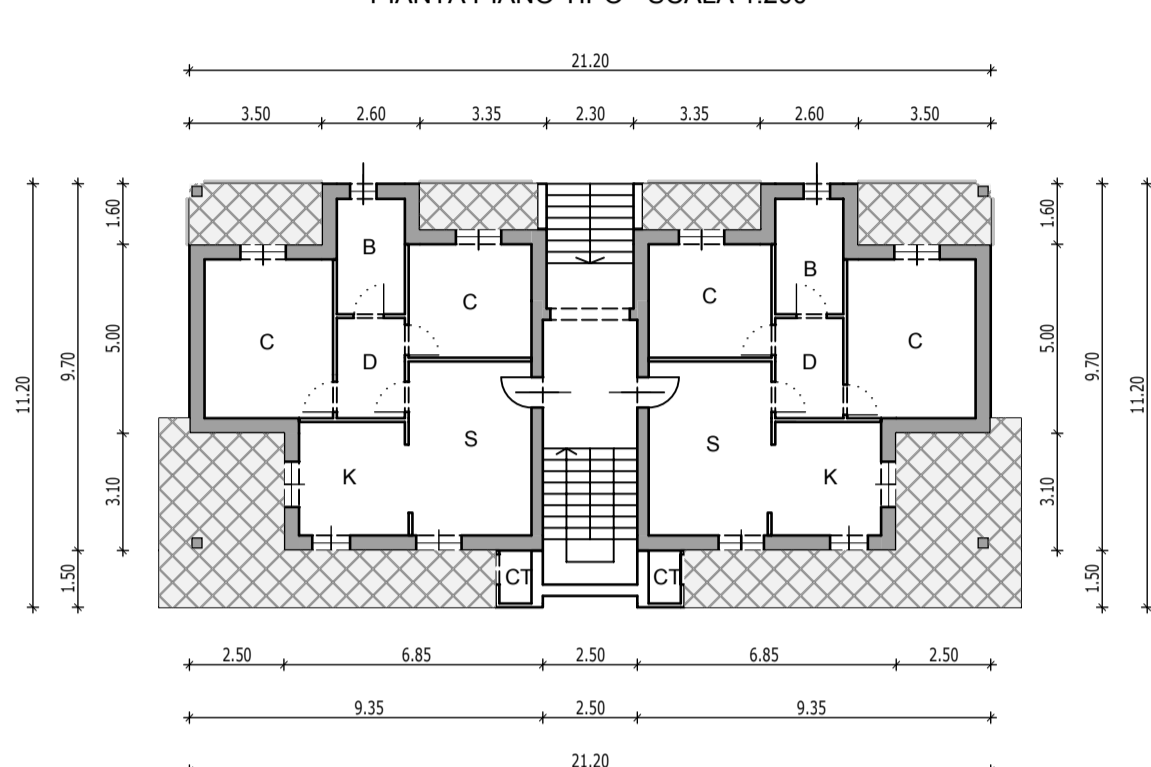


1	11.20*1.00	11,20	1	2*(5.75*5.50)	63,25
2	10.20*3.79	38,66	2	2*(2.85*5.50)	31,35
3	0.5*(10.20+6.40) *1.91	15,85			
4	0.5*(3.79+6.47)*4.81	24,68			
5	0.5*(6.47+6.93)*9.76	65,39			
				<b>Totale</b>	<b>94</b>

B	BIFAM	2+sott	551	193	136,27	0,25	414,73
C	QUADRIFAM	2+sott	775	271	232,70	0,30	542,30
TOTALE			4.492	1.572	1.299,77	0,29	



<b>Totale PEC</b>	<b>5*232,70+136,27=1.300</b>
-------------------	------------------------------

